

Anderson Auto Group

Proposed Overall Floor Plans

A 101

Date:
09.30.2013

City / State:
Grand Island, NE

ADDITIONAL PROTOTYPICAL DRAWINGS AND
DETAILS FOR THE FORD TRUSTMARK FACILITY
DESIGN CAN BE FOUND AT
WWW.FORDTRUSTMARKDESIGN.COM



These drawings are for communication of design intent only.
These drawings are not suited or intended for construction or fabrication.
All contents on this sheet are confidential.
Information and all rights therein are and will remain the property of Ford Motor Company.



① OVERALL FIRST FLOOR PLAN

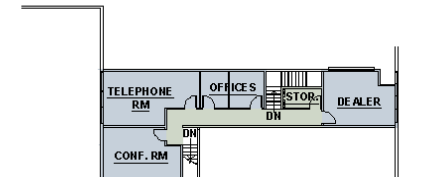
WALL LEGEND	
	EXISTING WALL
	PROPOSED WALL
	FRAMELESS GLASS
	CURTAIN WALL

AREA	TOTAL FORD PV - 432	TOTAL LINCOLN PV - 15	TOTAL PV - 447
ADMIN	1,250 SF		2,111 SF
BUILDING SUPPORT	1,467 SF		1,427 SF
CUSTOMER	720 SF		1,182 SF
PARTS	3,076 SF		3,110 SF
KIA PARTS	- SF		595 SF
QUICK LANE	2,400 SF		3,482 SF
SALES	3,980 SF		3,816 SF
SERVICE	8,419 SF		13,258 SF
# OF SERVICE STALLS	12 STALLS		12 STALLS
KIA SERVICE	- SF		935 SF
# OF SERVICE STALLS	- STALLS		2 STALLS
BODY SHOP	- SF		5,963 SF
TOTAL	21,312 SF		28,386 SF

NOTES:

LOCAL ARCHITECT TO V.I.F. ALL EXISTING BUILDING CONDITIONS.

PARTS MEZZININE, BODY SHOP AND KIA PARTS AND SERVICE SQ.FT. ARE NOT INCLUDED IN TOTAL SQ.FT.



② OVERALL SECOND FLOOR PLAN

Preliminary Design

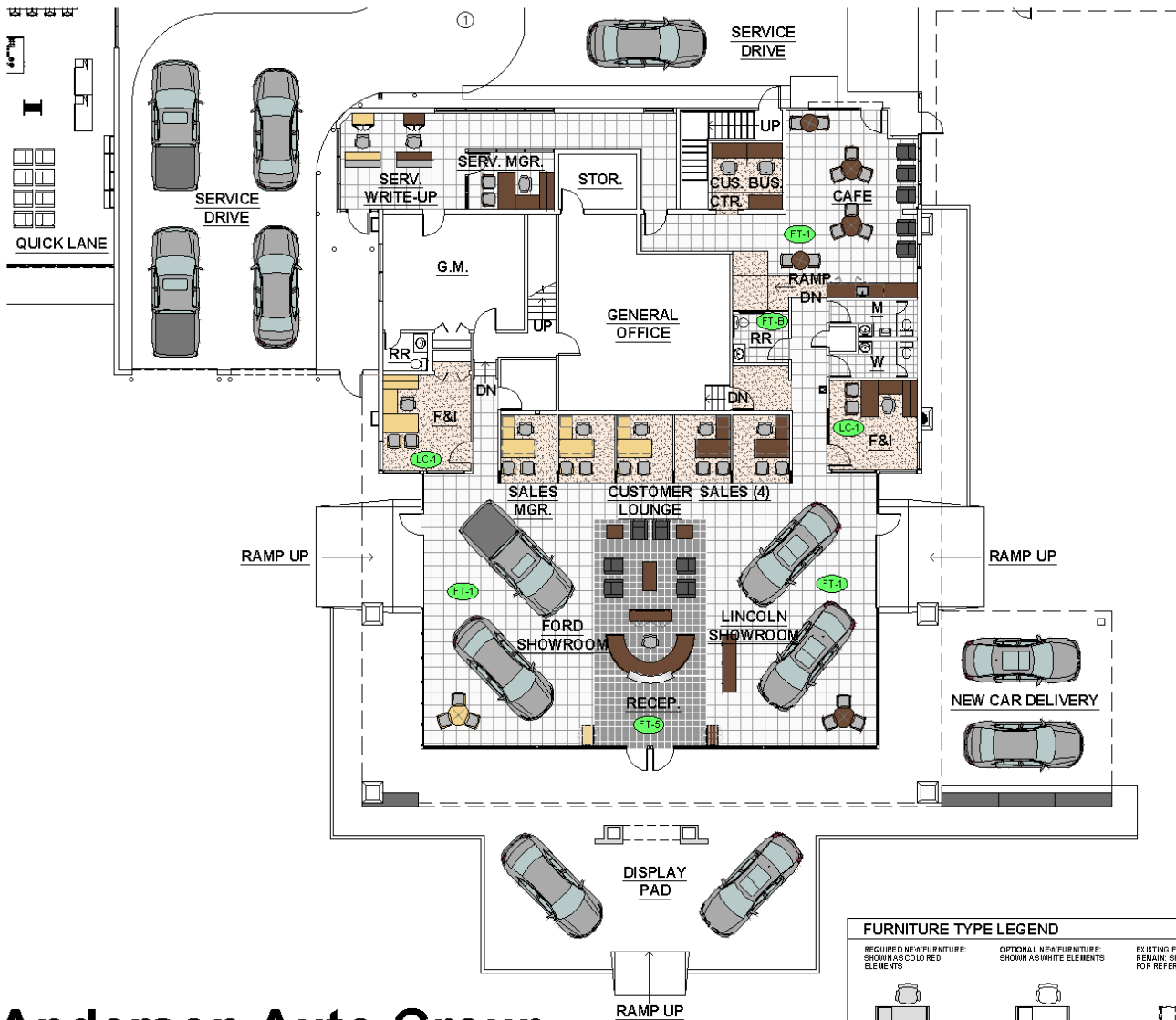


LINCOLN



Scale:
1/32" = 1'-0"

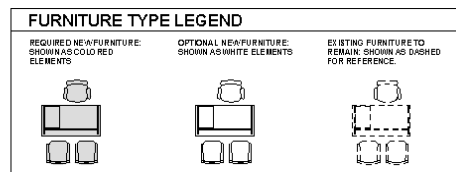




FLOORING SCHEDULE - REQUIRED ELEMENTS			
ITEM NO	NAME	STYLE	CONTACT INFO
FT-1	FORD SILVER TILE	21" x 21", POLISHED OR UNPOLISHED	1-800-514-8453
FT-5	FORD BLACK TILE	12" x 12", POLISHED GRANITE	1-800-514-8453
FT-B	RESTROOM TILE	14" x 14", POLISHED OR UNPOLISHED	1-800-514-8453
LC-1	LINCOLN OAK	CARPET TILES	1-610-908-4344
* REFER TO FINISH SCHEDULE FOR ADDITIONAL INFORMATION *			

NOTES:
 ① SEE SERVICE DEPARTMENT DETAILS FOR ADDITIONAL REQUIREMENTS. WALLS TO BE PAINTED AND FLOOR TO BE CLEANED OR REPAIRED. SEE FINISH SCHEDULE FOR SERVICE DEPARTMENT FLOORING OPTIONS.

LOCAL ARCHITECT TO V.I.F. ALL EXISTING BUILDING CONDITIONS.



Preliminary Design



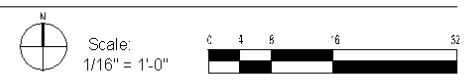
Anderson Auto Group

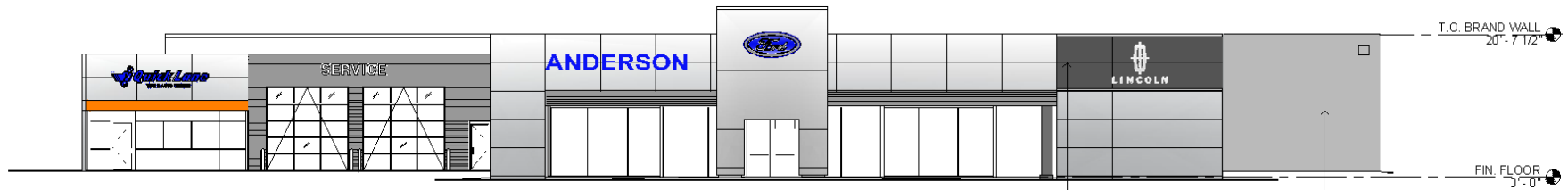
Proposed Enlarged First Floor Plan

A 201a Date: 09.30.2013 City / State: Grand Island, NE

ADDITIONAL PROTOTYPICAL DRAWINGS AND DETAILS FOR THE FORD TRUSTMARK FACILITY DESIGN CAN BE FOUND AT WWW.FORDTRUSTMARKDESIGN.COM

These drawings are for communication of design intent only. These drawings are not suited or intended for construction or fabrication. All contents on this sheet are confidential. Information and all rights therein are and will remain the property of Ford Motor Company.





① SOUTH ELEVATION
1/16" = 1'-0"



ACCENT PANELS REQUIRED:

ACM - RAIN SCREEN (DRY JOINT) METAL PANEL SYSTEM. ALPOLIC BLX BLACK (4MM4BLX) WITH DM HPA SILVER (3MM4HPA) TRIM OR FORD APPROVED EQUAL. PROVIDE BACKING AS REQUIRED, INSTALL PER MANUFACTURER'S SPECIFICATIONS.

EXTERIOR PAINT REQUIRED:

COLOR: GRANITE GREY, COONN 37/ 000 ORDER# A2005
MANUFACTURER: GLIDDEN PROFESSIONAL

METAL CLADDING REQUIRED:

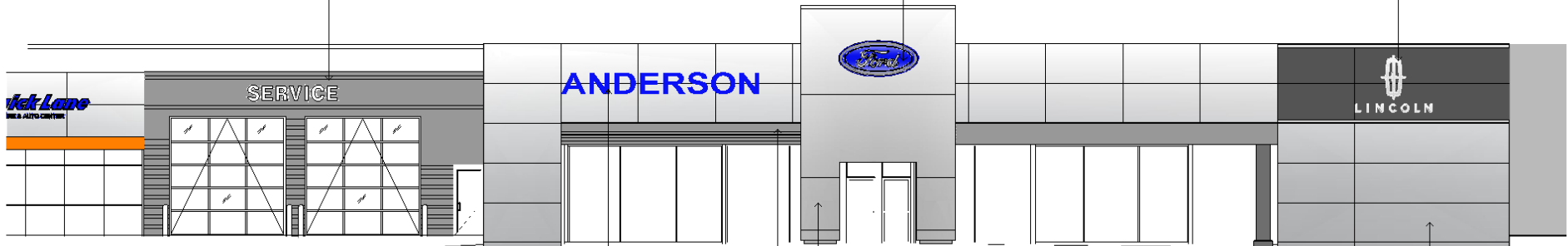
RIBBED METAL PANELS (EXPOSED, PAINTED FASTENER); ALCOA SLATE GREY OR FORD APPROVED EQUAL. REFER TO WWW.FORDTRUSTMARKDESIGN.COM FOR SPECIFICATIONS

SIGNAGE REQUIRED:

21 SQ.FT. FORD SIGN REFER TO FORD MOTOR COMPANY RETAIL IDENTIFICATION PROGRAM AT WWW.FORDTRUSTMARKDESIGN.COM FOR ADDITIONAL INFORMATION. ALL SIGNAGE PROVIDED & INSTALLED BY "AGI" PH. 888.856.7880

SIGNAGE REQUIRED:

LINCOLN SIGN REFER TO FORD MOTOR COMPANY RETAIL IDENTIFICATION PROGRAM AT WWW.FORDTRUSTMARKDESIGN.COM FOR ADDITIONAL INFORMATION. ALL SIGNAGE PROVIDED & INSTALLED BY "AGI" PH. 888.856.7880



② ENLARGED SOUTH ELEVATION
3/32" = 1'-0"



SIGNAGE REQUIRED:

26" HIGH DEALER NAME LETTERS. REFER TO FORD MOTOR COMPANY RETAIL IDENTIFICATION PROGRAM AT WWW.FORDTRUSTMARKDESIGN.COM FOR ADDITIONAL INFORMATION. ALL SIGNAGE PROVIDED & INSTALLED BY "AGI" PH.888.856.7880

TOWER REQUIRED:

ACM - RAIN SCREEN (DRY JOINT) METAL PANEL SYSTEM. ALPOLIC HAIRLINE ALUMINUM (4MM4HLZ) OR FORD APPROVED EQUAL. PROVIDE BACKING AS REQUIRED, INSTALL PER MANUFACTURER'S SPECIFICATIONS.

METAL CLADDING REQUIRED:

CORRUGATED METAL (EXPOSED, PAINTED FASTENER); ALCOA SLATE GREY OR FORD APPROVED EQUAL. REFER TO WWW.FORDTRUSTMARKDESIGN.COM FOR SPECIFICATIONS

BRAND WALL REQUIRED:

ACM - RAIN SCREEN (DRY JOINT) METAL PANEL SYSTEM. ALPOLIC HAIRLINE ALUMINUM (4MM4HLZ) OR FORD APPROVED EQUAL. PROVIDE BACKING AS REQUIRED, INSTALL PER MANUFACTURER'S SPECIFICATIONS.

Anderson Auto Group

Proposed Front Exterior Elevation

Preliminary Design



LINCOLN

LOCAL ARCHITECT TO V.I.F. ALL EXISTING BUILDING CONDITIONS.

A 601

Date:
09.30.2013

City / State:
Grand Island, NE

ADDITIONAL PROTOTYPICAL DRAWINGS AND DETAILS FOR THE FORD TRUSTMARK FACILITY DESIGN CAN BE FOUND AT
WWW.FORDTRUSTMARKDESIGN.COM



These drawings are for communication of design intent only. These drawings are not suited or intended for construction or fabrication. All contents on this sheet are confidential. Information and all rights therein are and will remain the property of Ford Motor Company.

Scale:
AS NOTED